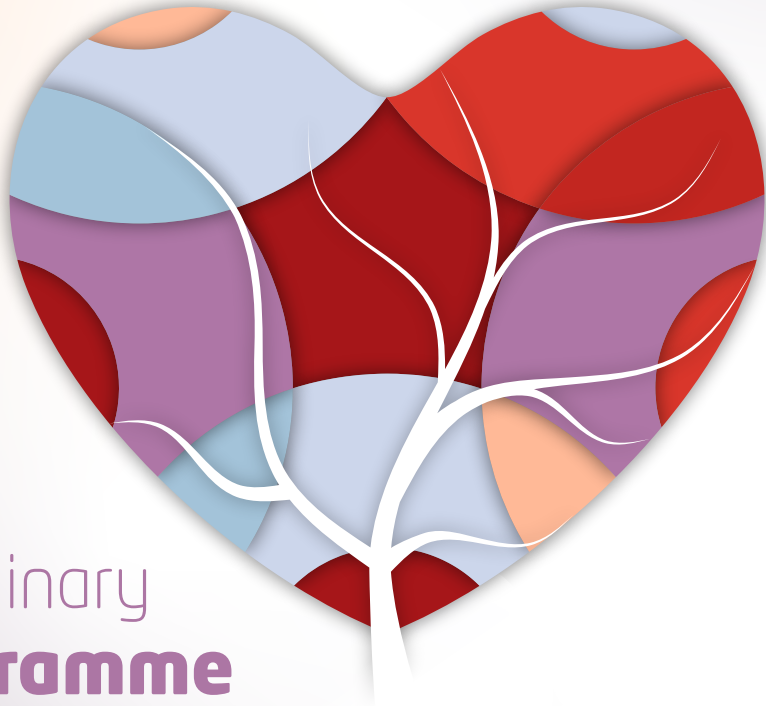


14<sup>th</sup>

# CHALLENGES in CARDIOLOGY

1-6 July 2024

MH Atlântico, Peniche



## Preliminary Programme

Scientific Support

**CHALLENGES in  
CARDIOLOGY**

[challengesincardiology.com](http://challengesincardiology.com)

Organization

**DNA** POWERED BY FactorChave  
**PRIME**  
SCIENTIFIC EDUCATION

Web Management

**PHORMULA**

Official Agency

**factorchave**<sup>o</sup>  
marketing integrado

# 14<sup>th</sup> CHALLENGES in CARDIOLOGY



## INTERACTIVE WORKSHOPS ONLINE EDITION

1-4 JULY 18:30 - 20:30

**1 july** monday

**Echocardiography for the non-cardiologist**

**2 july** tuesday

**Implanted electrical devices**

**What the family doctor should know**

**3 july** wednesday

**How to follow patients with heart failure**

**4 july** thursday

**Practical use of antithrombotic therapy**

Preliminary **Programme**



**5 july**

friday

**14<sup>th</sup>**  
**CHALLENGES in**  
**CARDIOLOGY**

- 10.00 **The best of 2023**
- 10.45 **Artificial intelligence:  
What clinicians should know**
- 11.30 Coffee and e-Poster exhibition
- 12.00 **Master plan for healthy ageing**
- 12.45 **News on lipids and lipidology**
- 13.30 Lunch
- 14.45 **Cardio-renal syndrome and hyperkalemia**
- 15.30 **Modulating antiplatelet therapy after ACS**
- 16.15 Coffee and e-Poster exhibition
- 16.45 **Finerenone and cardiovascular risk**
- 17.30 **How to decide?  
Challenging clinical cases**

**EVIGATION Award 2024**



Preliminary **Programme**

**6 july**  
saturday

**14<sup>th</sup>**  
**CHALLENGES in**  
**CARDIOLOGY**

- 09.00 **Clinical cases on imaging:  
Young Investigator Award CIC 2024**
- 10.00 **Worsening heart failure:  
A new concept to be widespred**
- 10.45 **Factor XI a new target for antithrombotic therapy**
- 11.30 Coffee and e-Poster exhibition
- 12.00 **Management of cardiovascular disease  
in patients with diabetes**
- 12.45 **Deep vein thrombosis in patients with cancer**
- 13.30 Lunch
- 14.45 **Icosapent ethyl action:  
Focus on secondary prevention**
- 15.30 **Valvular heart disease:  
A careful selection of patients for intervention**
- 16.15 **The challenging world of heart failure with  
preserved ejection fraction**
- 17.00 **Closing session and awards**



Preliminary **Programme**